



# FY 2025 County Transportation Plan

## Marshall County



Date Approved by the Marshall County Commission: August 14, 2024

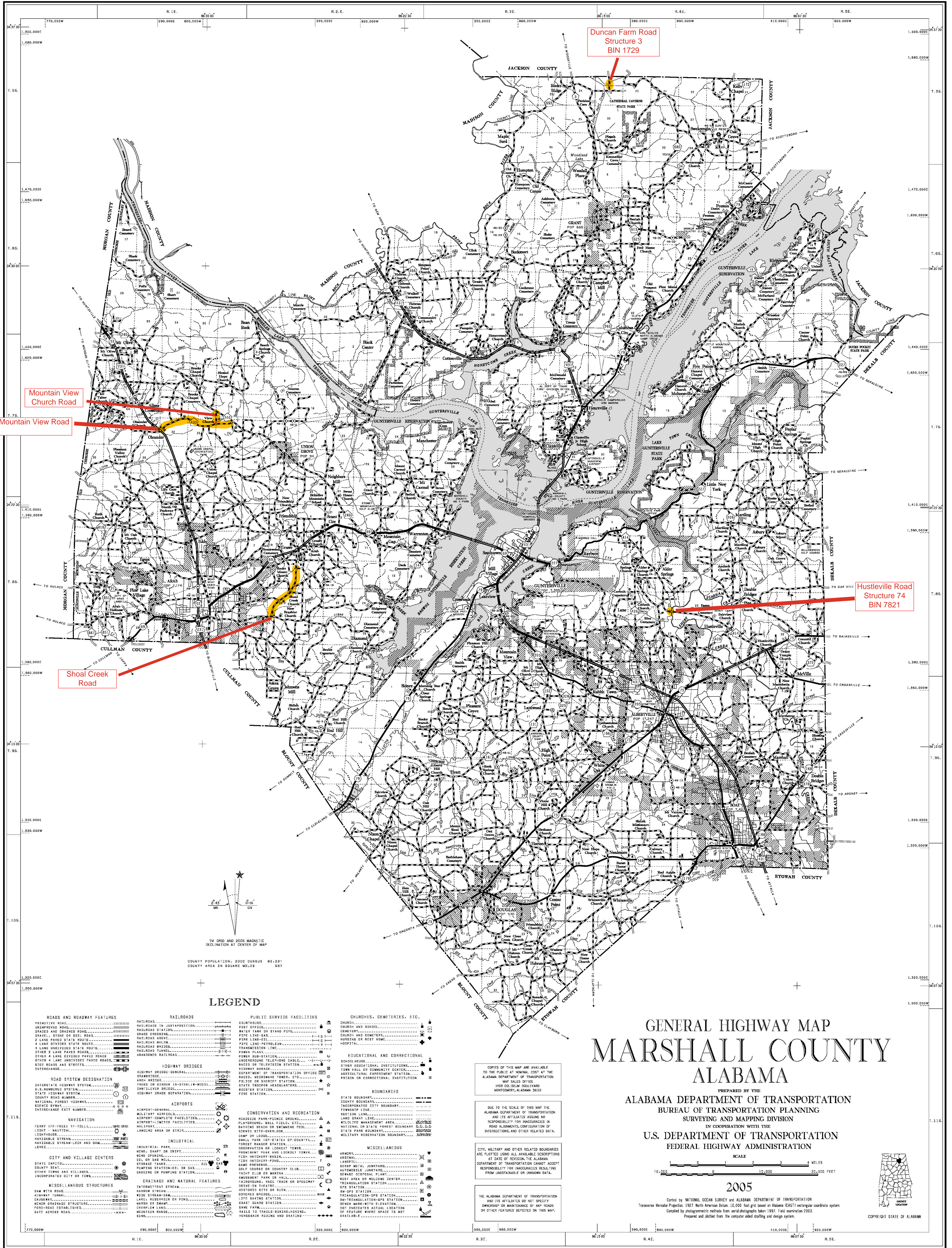
Date Amended by the Marshall County Commission: (If Applicable)

Map Index	Project No.	Road Name/Number	Begin		End		Project Details			Total Project Estimated Cost	Estimated Amount Planned To Be Utilized Under Competitive Bid	Estimated Amount Planned To Be Utilized Under Public Works	County Rebuild Alabama Funds or Federal Aid Exchange Funds (List fund type separately for projects involving both CRAFs and FAEFs)	CRAF Amount	FAEF Amount		
			Lat.	Long.	Lat.	Long.	Road Improvement Project	Bridge Improvement Project	Project Length (miles)							Description of Work	
Estimated Beginning Balance														\$0.00	\$0.00		
Estimated Annual Revenue																	
1	RA-MCP-48-106-24	Mountain View Road	34 4140	-86.5278	34 4187	-86.4822	X		2.820	Resurface & Stripe Mountain View Road from Union Grove Road to US 231	\$499,179.40		\$499,179.40	CRAF	\$499,149.70		
2	RA-MCP-48-106-24	Shoal Creek Road	34 344456	-86.442518	34 3169	-86.4573	X		1.790	Resurface and Stripe Shoal Creek Road from Brindlee Elementary School to Brashers Chapel Road	\$330,390.50		\$330,390.50	CRAF	\$330,390.50		
3	RA-MCP-48-106-24	Mountain View Church Road	34 4174	-86.4927	34.4239	-86.4919	X		0.464	Resurface and Stripe Mountain View Church Road from Mountain View Road to Union Grove Road	\$78,483.00		\$78,483.00	CRAF	\$78,483.00		
4	RA-MCP-48-105-24	Hustleville Road Structure 74 BIN 7821	34 320346	-86.204786	34.320323	-86.204762		X	0.19	Environmental, Preliminary Engineering & Design Work	\$850,000.00		\$850,000.00	CRAF	\$850,000.00		
5	RA-MCP-48-104-24	Duncan Farm Road Structure 3 BIN 1729	34 596664	-86.244665	34.596664	-86.244665		X	0.009	New Bridge to be Built	\$400,000.00		\$400,000.00	FAEF	\$400,000.00		
Totals/Page Totals			Total Miles Addressed by CTP (Total Mileage Does Not Include Bridge Projects)							5.273	Total CTP Estimated Costs	\$2,158,052.90	\$0.00	\$2,158,052.90	Total CRAF/FAEF Remaining Estimated	(\$1,758,023.20)	(\$400,000.00)

Note: Any amendments to the CTP shall follow the same guidelines and procedures as the original approval process.

Remarks





# GENERAL HIGHWAY MAP MARSHALL COUNTY ALABAMA

PREPARED BY THE  
ALABAMA DEPARTMENT OF TRANSPORTATION  
BUREAU OF TRANSPORTATION PLANNING  
SURVEYING AND MAPPING DIVISION  
IN COOPERATION WITH THE  
U.S. DEPARTMENT OF TRANSPORTATION  
FEDERAL HIGHWAY ADMINISTRATION

SCALE  
10,000 0 10,000 20,000 FEET

2005

Control by NATIONAL OCEAN SURVEY AND ALABAMA DEPARTMENT OF TRANSPORTATION  
Transverse Mercator Projection, 1927 North American Datum, 10,000 feet grid based on Alabama (GAS1) rectangular coordinate system  
Compiled by photogrammetric methods from aerial photographs taken 1997. Field verification 2003.  
Prepared and plotted from the computer-aided drafting and design system.

COPYRIGHT STATE OF ALABAMA

## LEGEND

- |   |   |   |   |
|---|---|---|---|
| <p><b>ROADS AND ROADWAY FEATURES</b></p> <ul style="list-style-type: none"> <li>UNIMPROVED ROAD</li> <li>GRAVEL AND DIRT ROAD</li> <li>GRAVEL, STONE OR SOIL ROAD</li> <li>2 LANE PAVED STATE ROUTE</li> <li>4 LANE UNDIVIDED STATE ROUTE</li> <li>OTHER 2 LANE PAVED ROAD</li> <li>OTHER 4 LANE UNDIVIDED PAVED ROAD</li> <li>OTHER 4 LANE DIVIDED PAVED ROAD</li> <li>SIDE ROAD AND STREET</li> <li>INTERCHANGE</li> </ul> <p><b>ROAD SYSTEM DESIGNATION</b></p> <ul style="list-style-type: none"> <li>INTERSTATE HIGHWAY SYSTEM</li> <li>U.S. NUMBERED SYSTEM</li> <li>STATE HIGHWAY SYSTEM</li> <li>COUNTY ROAD NUMBER</li> <li>NATIONAL FOREST HIGHWAY</li> <li>SCenic BYWAY</li> <li>INTERCHANGE EXIT NUMBER</li> </ul> <p><b>NAVIGATION</b></p> <ul style="list-style-type: none"> <li>FERRY (OFF-FREES) FERRY-TOLL</li> <li>LIGHT NAUTICAL</li> <li>LIGHT STATUTE</li> <li>NAVIGABLE STREAM</li> <li>LEVEL</li> </ul> <p><b>CITY AND VILLAGE CENTERS</b></p> <ul style="list-style-type: none"> <li>STATE CAPITAL</li> <li>COUNTY SEAT</li> <li>OTHER TOWNS AND VILLAGES</li> <li>INCORPORATED CITY OR TOWN</li> </ul> <p><b>MISCELLANEOUS STRUCTURES</b></p> <ul style="list-style-type: none"> <li>DAM WITH ROAD</li> <li>SWAMPY TUNDRA</li> <li>GAUSSIAN</li> <li>WATER DAMAGED STRUCTURE</li> <li>FORD-ROAD ESTABLISHED</li> <li>SAFE ACROSS ROAD</li> </ul> | <p><b>RAILROADS</b></p> <ul style="list-style-type: none"> <li>RAILROAD IN JUNCT POSITION</li> <li>RAILROAD STATION</li> <li>GRADE CROSSING</li> <li>RAILROAD BRIDGE</li> <li>RAILROAD TUNNEL</li> <li>ABANDONED RAILROAD</li> </ul> <p><b>HIGHWAY BRIDGES</b></p> <ul style="list-style-type: none"> <li>HIGHWAY BRIDGE-GENERAL</li> <li>DIAMBRIDGE</li> <li>ARCH BRIDGE</li> <li>TUBES ON BEAM (CONCRETE) WOOD</li> <li>CANTILEVER BRIDGE</li> <li>HIGHWAY GRADE SEPARATION</li> </ul> <p><b>AIRPORTS</b></p> <ul style="list-style-type: none"> <li>AIRPORT-GENERAL</li> <li>MILITARY AIRFIELD</li> <li>AIRPORT-COMPLET FACILITIES</li> <li>AIRPORT-LIMITED FACILITIES</li> <li>HILIFORT</li> <li>LANDING AREA OR STRIP</li> </ul> <p><b>INDUSTRIAL</b></p> <ul style="list-style-type: none"> <li>INDUSTRIAL PARK</li> <li>VIEW SHED ON DRAINAGE</li> <li>WINE DRINKING</li> <li>CEL OR GAS WELLS</li> <li>STORAGE TANKS</li> <li>PUMPING STATION-OIL OR GAS</li> <li>DRAINAGE OR PUMPING STATION</li> <li>WATER OR SWAMP</li> <li>OVERFLOW</li> <li>MOUNTAIN HARBOR</li> <li>SEWAGE</li> </ul> <p><b>DRAINAGE AND NATURAL FEATURES</b></p> <ul style="list-style-type: none"> <li>INTERMITTENT STREAM</li> <li>NARROW STREAM</li> <li>WIDE STREAM-DAM</li> <li>LAKE, RESERVOIR OR POND</li> <li>WATER OR SWAMP</li> <li>OVERFLOW</li> <li>MOUNTAIN HARBOR</li> <li>SEWAGE</li> </ul> | <p><b>PUBLIC SERVICE FACILITIES</b></p> <ul style="list-style-type: none"> <li>COURTHOUSE</li> <li>POST OFFICE</li> <li>WATER TANK OR STAND PIPE</li> <li>PIPE LINE-GAS</li> <li>PIPE LINE-OIL</li> <li>PIPE LINE-PETROLEUM</li> <li>POWER PLANT</li> <li>POWER SUB-STATION</li> <li>UNDERGROUND TELEPHONE CABLE</li> <li>RADIO OR TELEVISION STATION</li> <li>HEAVY MARSH</li> <li>DEPARTMENT OF TRANSPORTATION OFFICE</li> <li>RAILROAD BRIDGE OR SKIRMING POND</li> <li>POLICE OR SHERIFF STATION</li> <li>STATE TROOPER HEADQUARTERS</li> <li>BOOSTER STATION</li> <li>FIRE STATION</li> </ul> <p><b>CONSERVATION AND RECREATION</b></p> <ul style="list-style-type: none"> <li>ROADSIDE PARK-PICNIC GROUND</li> <li>PLAYGROUND, BALL FIELDS, ETC.</li> <li>BATHING BEACH OR SWIMMING POND</li> <li>SCENIC STATE-OVERLOOK</li> <li>CAMP OR LODGE STATION</li> <li>SMALL PARK (EX-STATE) EX-COUNTY</li> <li>FORREST RANGER STATION</li> <li>OBSERVATION OR LOOKOUT TOWER</li> <li>PROMENADE PLAZA AND LOOKOUT TOWER</li> <li>FISH HATCHERY-POND</li> <li>FISH HATCHERY-POND</li> <li>SOFT COURSE OR COUNTRY CLUB</li> <li>YACHT CLUB OR MARINA</li> <li>AMUSEMENT PARK OR ROLLER COASTER</li> <li>STATE BOAT LIFT OR SPEEDWAY</li> <li>HISTORIC SITE ON RIVER</li> <li>OPENED BRIDGE</li> <li>LIFE SAVING STATION</li> <li>STATE BOAT LIFT OR SPEEDWAY</li> <li>GAME FARM</li> <li>HALL TO TRAIL-BIKING-TRAILING</li> <li>HORSEBACK RIDING AND STABLE</li> </ul> | <p><b>CHURCHES, CEMETERIES, ETC.</b></p> <ul style="list-style-type: none"> <li>CHURCH</li> <li>CHURCH AND SCHOOL</li> <li>CHURCH AND CEMETERY</li> <li>NURSING OR REST HOME</li> <li>HOSPITAL</li> </ul> <p><b>EDUCATIONAL AND CORRECTIONAL</b></p> <ul style="list-style-type: none"> <li>SCHOOL HOUSE</li> <li>OTHER EDUCATIONAL INSTITUTIONS</li> <li>STATE COLLEGE</li> <li>AGRICULTURAL EXPERIMENT STATION</li> <li>NURSING OR REST HOME</li> <li>PRISON OR CORRECTIONAL INSTITUTION</li> </ul> <p><b>BOUNDARIES</b></p> <ul style="list-style-type: none"> <li>STATE BOUNDARY</li> <li>COUNTY BOUNDARY</li> <li>INCORPORATED CITY BOUNDARY</li> <li>TOWNSHIP LINE</li> <li>LAND GRANT LINE</li> <li>WELLSITE MANAGEMENT AREA</li> <li>NATIONAL OR STATE HOMEST BOUNDARY</li> <li>STATE PARK BOUNDARY</li> <li>MILITARY RESERVATION BOUNDARY</li> </ul> <p><b>MISCELLANEOUS</b></p> <ul style="list-style-type: none"> <li>ARMORC</li> <li>SECTION LINE</li> <li>LANDFILL</li> <li>SEWAGE METAL JUNKYARD</li> <li>AUTOMOBILE JUNKYARD</li> <li>YACHT CLUB OR MARINA</li> <li>HEAT AREA OR HELICOPTER CENTER</li> <li>TRIANGULATION STATION</li> <li>GPS STATION</li> <li>FM-SPS STATION</li> <li>TRIANGULATION GPS STATION</li> <li>SM-TRANSLATION-GPS STATION</li> <li>GPS STATION</li> <li>DOT INDICATES ACTUAL LOCATION</li> <li>DOT FEATURE WHERE SPACE IS NOT AVAILABLE</li> </ul> |
|---|---|---|---|