

BID SUBMITTAL FORM
Alabama County Joint Bid Program
BID ITEM – HIGHWAY SPEED TRUCK MOUNTED EXCAVATOR - 2WD

Company Name: Tractor & Equipment Co. Inc.

Address: P. O. Box 12326

Birmingham, AL 35212

Bid Submitted by: Audrey McMillan Jr.
 (Name of company representative)

Title: V. P. E-mail Address: amcmillan@TEC1943.com

Phone: 205-591-2131 Fax: 205-591-8321

By submitting this bid, we agree:

Initials

The equipment model number identified below meets the bid specs for this bid item

Am

That the bid price will be honored for all counties for the period from **January 1, 2025** to **December 31, 2025**.

Am

The equipment will be delivered at the bid price to all counties participating in the joint bid program

Am

The company representative listed above will be the contact person for purchasing this bid item under the joint bid program

Am

The bid is accompanied by a current catalog or model specification document for the model number identified below

Am

The bid is accompanied by a copy of the manufacturer's standard warranty as required in the bid specifications

Am

The bid includes the E-Verify documentation required by Alabama law

Am

If awarded the bid, a performance bond will be provided upon request

Am

The bid documents include the **Manufacturer's Suggested Retail Price Sheet (MSRP) for the Standard Machine**

Am

Total Bid Price for Standard Machine: \$ 351,300⁰⁰
(Total Bid Price for Standard Machine Includes Freight Preparation, Delivery and Standard Warranty Costs)*

Freight Preparation and Delivery: \$ 4,500⁰⁰
(Included in Standard Machine Bid Price)

Manufacturer's Suggested Retail Price for Standard Machine: \$ 368,092

Equipment Model #: Gradall D172

Description: Hwy Speed excavator 2WD

Signature of company representative submitting bid: 

Title: V.P.

***NOTE:** Award will be made based on the total cost of the **Standard Machine**. The total cost of the standard machine is to include the freight preparation, delivery and standard warranty cost. Freight preparation, delivery will be excluded from the total bid price of the standard machine in determining the percentage discount for any available options.

BID SUBMITTAL FORM: OPTION COST SHEET

By submitting this bid, we agree:

To offer any available options at the percent difference between the Manufacturer's Suggested Retail Price Sheet and the actual bid price on the Standard Machine*

AM

The bid documents include the Manufacturer's Suggested Retail Price Sheet (MSRP) with **any available Options** for the Standard Machine

AM

Equipment Model #: Giedall D172

Description: Any Speed Excavator 2WD

Signature of company representative submitting bid:

[Handwritten Signature]

Title:

V.D.

***Note:** The percent difference between the **Manufacturer's Suggested Retail Price Sheet (MSRP)** for the standard machine as specified by these **Bid Specifications** and the actual price bid by the vendor will be calculated to determine the percentage discount to be applied to any available options. The bid price of the freight preparation, delivery cost shall be excluded in determining the percentage discount to be applied to available options. Any individual county may choose to add any available option to the standard machine at the percentage discount at the time of purchase.

HIGHWAY SPEED TRUCK MOUNTED EXCAVATOR - 2WD

GENERAL:

It is the intent of this specification to describe a carrier mounted, single engine, full hydraulic telescoping boom excavator capable of excavating, grading, sloping, backfilling, etc., equivalent to a **Gradall model D172**. The unit shall be current production and the manufacturer's printed literature shall be submitted with the bid.

The excavator shall consist of a revolving upper-structure mounted on a rubber-tired highway speed carrier complete with remote control as follows:

Rotating Structure

The Upper-structure shall be supported on the carrier by an internal swing bearing and shall be capable of continuous swing at not less than **8 RPM**. The counterweight shall weigh not more than **4,500 pounds** and the tail swing shall not exceed **6' 7"**. The swing system shall incorporate a spring set, hydraulic release swing parking brake. Anti-slip paint is required on all walking surfaces.

Yes No
Page # 2

Boom

The boom shall be triangular in cross section and shall consist of a main section and a telescoping section. Adjustable boom rollers shall be furnished on both boom sections. The telescope section shall be equipped with pin-on buckets and shall telescope hydraulically through a distance of not less than **10' 3"**. The boom assembly shall be supported by a cradle that provides for the tilt of the entire boom assembly and attachment through an arc of not less than **220°** about its longitudinal axis. The boom shall rise through an arc of not less than **30°** and lower not less than **60°**. The attachment shall open and close through an arc of not less than **165°**.

Yes No
Page # 1-2

Hydraulic System

Power for the hydraulic system shall be supplied by the carrier engine. There shall be one-piston pump providing not less than **58 GPM @ 3800 PSI**. The pump shall be engaged with a PTO to the transmission. The system shall provide for simultaneous boom, swing and remote functions, quick disconnect type pressure check ports, minimum **51 HP** swing motor, minimum **21 HP** tilt motor and appropriate relief valves, oil cooler and filter with service indicator. The pressurized reservoir shall be of minimum **62-gallon** capacity and shall be equipped with sight level gauges. System operating pressure shall not exceed **3,800 PSI**.

Yes No
Page # 1

Cab & Controls

The operator's cab shall be all weather with safety glass windows and skylight. The cab shall be complete with front window that rolls overhead for storage, wiper washer, AC, AM/FM radio, four-way adjustable seat, acoustical treatment, signal horn, filtered heater and defroster. The controls shall be self-centering dead-man type consisting of 2 electronic joysticks mounted on the armrests. Engine controls shall include key type ignition switch with neutral start and throttle. There shall be warning lights for low air, low DEF, engine maintenance, hydraulic filter condition and level. There shall be an automatic engine shutdown for low oil pressure or high coolant temperature. Remote carrier propel, steering and automatic digging brake shall be controlled by two-foot pedals and two joystick mounted switches. The hydraulic remote-control system shall be complete with an emergency brake control and travel alarm.

Yes No
Page # 1

Carrier

The carrier shall be a **4x2** rubber tired type, **8' 6"** wide with a **37,320-lb.** gross vehicle axle weight rating. The frame shall be the manufacture's standard, reinforced with Steel frame insert (**1/4" full C-channel**) from beyond the front spring hanger in the front and extending throughout the total length of the frame to the rear. There shall be a separate sub-frame for Upper-structure mounting. The wheelbase of the unit shall be a minimum of **15' 10"** and the frame width a minimum of **34"**. There shall be a minimum **80-gallon** fuel tank and a minimum **13-gallon DEF tank**. The carrier shall be equipped with transmission operated remote control.

Yes No
Page # 3

Engine

The carrier shall be powered by the current emissions certified "clean idle" liquid cooled turbo charged air after cooled diesel engine with a minimum of **300 hp @ 2600 RPM**. The engine shall be equipped with an electric grid warmer, two stage dry type air cleaner, spin on fuel filter, and oil filter. The electrical system shall be 12-volt and incorporate a **160-amp** alternator.

Yes No
Page # 1

Transmission

The carrier shall be equipped with a **5-speed** Automatic transmission, **Allison 3500RDS**, having **5 forward** speeds and **1 reverse** speed. Max road speed shall be **55 mph**.

Yes No
Page # 2

Axles and Suspension

The front axle shall be rated at **14,320-lb.** minimum. The front suspension shall be leaf type and shall be complete with automatic lockout cylinders.

Yes No
Page # 2

The rear axle shall be rated at **23,000 lb.** minimum with a **6.43 ratio** and single reduction. The axle shall be equipped with a cab controlled differential lock.

Yes No
Page # 2

Brakes

The carrier shall be equipped with anti-lock braking system to include four-wheel cam type air brakes and automatic slack adjusters. The system shall include spring set brakes incorporating emergency and parking brakes on the rear axle. The system shall include a minimum **18.7 C.F.M.** air compressor and desiccant type air dryer with automatic purge valve and thermostatically controlled heater.

Yes No
Page # 2

Wheels and Tires

The wheels shall be 10-stud hub piloted disc. The front tires shall be single **275/80R22.5** with highway traction tread. The four rear tires shall be **M/S11R22.5 14 ply** with mud and snow traction tread.

Yes No
Page # 2

Steering

Carrier steering shall be integral hydraulic power steering.

Yes No
Page # 2

Cab

The carrier cab shall be a two man, isolation mounted cab. The cab shall include a driver's high back air suspension seat, a basic high back non-suspension passenger seat, **3 point** high visibility orange driver and passenger seat belts, adjustable tilt and telescoping steering column, tinted safety glass windows, acoustical lining, and heater/defroster and Air Conditioner. Both side windows must open for ventilation and be adjustable.

Yes No
Page # 1

The cab instrument panel shall include the following equipment: Gauges for oil pressure, coolant temperature, dual air tank pressures, fuel level, indicator for DEF level, low DEF level warning light/alarm, voltmeter, hour meter, speedometer and odometer and intake air restriction indicator. The carrier shall be complete with electronic cruise control, AM/FM radio, headlights, tail lights, stoplights, back-up lights, identification light clusters, turn indicators, hazard warning, electric windshield wiper and washer, back-up alarm and plain and convex mirrors on both sides.

Yes No
Page # 1-2

Operating Weight

Working weight, including 60" excavating bucket and half-full fuel tanks shall meet or exceed **32,200** pounds.

Yes No
Page # 3

Digging Specifications with 60" Excavating Bucket

Maximum Digging Depth: 13' 6"
Maximum Surface Reach: 24' 11"
Boom Tilt (Total Arc/CW Arc/CCW Arc): 220°/110°/110°
Minimum Reach (Cleanup - Bucket level, ground level boom retracted): 6' 8"
Maximum Digging Depth (165° Pivot): 13'6"
Minimum Boom Arc: +30°, -60° level
Tail Swing: 6' 7"
Maximum Height with Bucket Below ground level: 14' 1"
Maximum Loading Height 16' 4"
Bucket Pivot 165°

Yes No
Page # 3

Lifting Capacity without bucket, at ground level

	Over-End	Over-Side
15' 0" Radius	4,760 lbs.....	4,760 lbs.
20' 0" Radius	3,365 lbs.....	3,365 lbs.
22' 9" Max Radius	2,950 lbs.	2,950 lbs.

Yes No
Page # 3

Travel Dimensions with 60" Excavating Bucket

Width 8' 6"
Height with bucket 12' 3"
Length 27' 1"

Yes No
Page # 3

The equipment shall be capable of performing all functions without the use of outriggers.

Yes No
Page # 3

★ GRADALL ★

DISCOVERY

SERIES



HIGHER PRODUCTIVITY
WITH A LOWER EQUIPMENT INVESTMENT

Crossover Hydraulic Excavators for Governments
and Specialty Contractors



THE GRADALL BOOM...

...carving out a worldwide reputation for versatility.
Now available in a high-value, budget-conscious design.

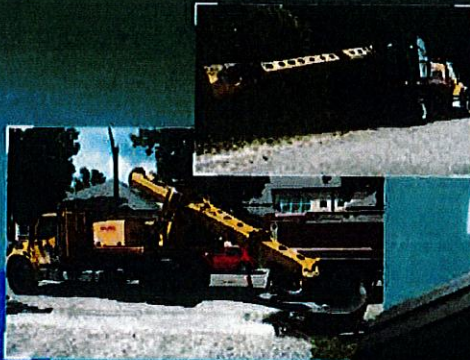
Gradall's new design philosophy positions this boom to perform more productively under the most difficult of jobs. For example, you can use it to dig under the hood of a truck, or to dig out water from a flooded basement.

The 2210C you see here without backhoe boom. Because a 6000 lb boom can be raised in less than 20 seconds, it's more easily repositioned.

The 2210C Gradall boom is 22' long, so it can dig 23' deep. It's also 11' wide, so it can dig under a 12' wide truck. And it can be attached with a tractor, skid steer loader or crane.

Plus, Discovery Series models feature the famous Gradall telescoping boom advantages. That's a low minimum working height for tight access to under bridges, in basements, under trees and standing next to other known work locations.

These are Gradall boom's two other advantages. Digging is done simply, without the usual extra manual adjustments and fiddling. An operator with one hand does it all simply, fast and easy.



- GRADALL BOOM MOVEMENTS:**
- Entire boom tilts 220° for full boom and bucket force
 - Telescopes to 24" 11" at grade
 - Swing left and right
 - Dig down at a 60° angle
 - Raise up for truck loading and material placement
 - Low working profile under bridges, trees and in tunnels



MORE DIG FOR THE DOLLAR

DESIGNED INTO EVERY DETAIL

CHASSIS CAB

- 100-hp, 2000-cm³ Isuzu engine
- 5-speed manual transmission
- 1000-lb. GVW
- 1000-lb. payload capacity
- 1000-lb. GVW
- 1000-lb. GVW
- 1000-lb. GVW
- 1000-lb. GVW

CHASSIS DESIGN

- 1000-lb. GVW
- 1000-lb. GVW
- 1000-lb. GVW
- 1000-lb. GVW
- 1000-lb. GVW
- 1000-lb. GVW
- 1000-lb. GVW
- 1000-lb. GVW

- TYPICAL APPLICATIONS:**
- Picking
 - Mowing
 - Grading
 - Vegetation control
 - Culvert replacement
 - Curb, gutter, sidewalk replacement and removal
 - Landscaping

BOOM

- 1000-lb. GVW
- 1000-lb. GVW
- 1000-lb. GVW
- 1000-lb. GVW
- 1000-lb. GVW
- 1000-lb. GVW
- 1000-lb. GVW
- 1000-lb. GVW



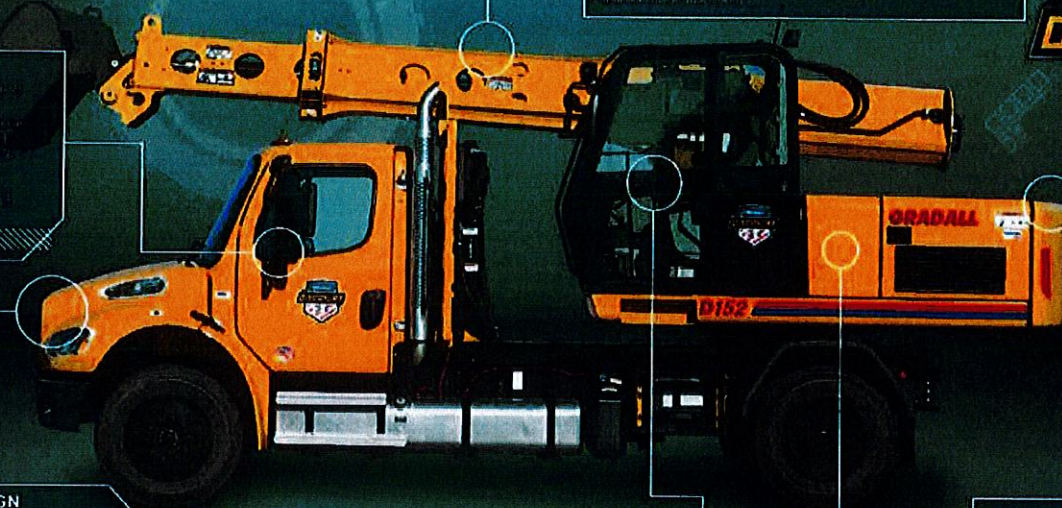
EXCAVATOR

OPERATOR CAB

- 1000-lb. GVW
- 1000-lb. GVW
- 1000-lb. GVW
- 1000-lb. GVW
- 1000-lb. GVW
- 1000-lb. GVW
- 1000-lb. GVW
- 1000-lb. GVW

ADVANCED SYSTEMS

- 1000-lb. GVW
- 1000-lb. GVW
- 1000-lb. GVW
- 1000-lb. GVW
- 1000-lb. GVW
- 1000-lb. GVW
- 1000-lb. GVW
- 1000-lb. GVW

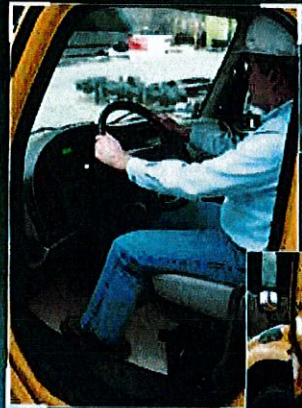
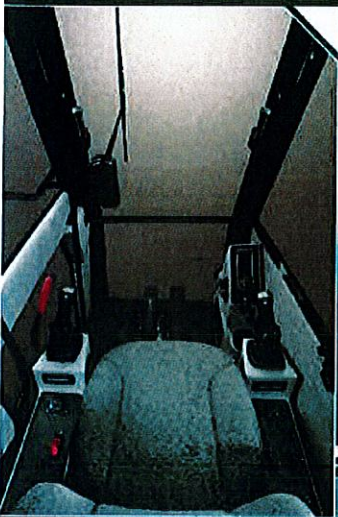




CABS DESIGNED FOR COMFORT AND EFFICIENCY

OPERATOR CAB

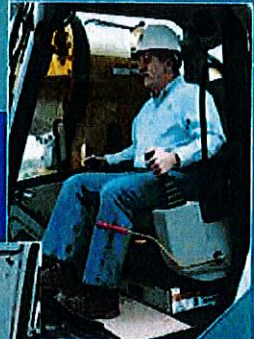
- 2400 sq. ft. of storage space for equipment and materials
- 10 tie-downs for securing equipment
- 10 tie-downs for securing materials
- 10 tie-downs for securing equipment
- 10 tie-downs for securing materials
- 10 tie-downs for securing equipment
- 10 tie-downs for securing materials
- 10 tie-downs for securing equipment
- 10 tie-downs for securing materials
- 10 tie-downs for securing equipment
- 10 tie-downs for securing materials
- 10 tie-downs for securing equipment
- 10 tie-downs for securing materials
- 10 tie-downs for securing equipment
- 10 tie-downs for securing materials
- 10 tie-downs for securing equipment
- 10 tie-downs for securing materials



Discovery's operator cab is the only one in the industry that offers a full range of options for operator comfort and efficiency. The cab is designed to provide a safe and comfortable environment for the operator, with a focus on ergonomics and safety. The cab is also designed to be easy to enter and exit, with a wide door and a low step-in height. The cab is also designed to be easy to clean and maintain, with a smooth interior and a durable exterior. The cab is also designed to be easy to repair, with a simple design and a variety of replacement parts available.

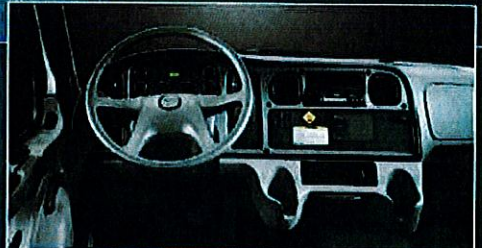


Safety is a top priority for Discovery, and our operator cabs are designed with safety in mind. The cabs are equipped with a variety of safety features, including seat belts, air conditioning, and a fire extinguisher. The cabs are also designed to be easy to enter and exit, with a wide door and a low step-in height. The cabs are also designed to be easy to clean and maintain, with a smooth interior and a durable exterior. The cabs are also designed to be easy to repair, with a simple design and a variety of replacement parts available.



CHASSIS CAB

- 2400 sq. ft. of storage space for equipment and materials
- 10 tie-downs for securing equipment
- 10 tie-downs for securing materials
- 10 tie-downs for securing equipment
- 10 tie-downs for securing materials
- 10 tie-downs for securing equipment
- 10 tie-downs for securing materials
- 10 tie-downs for securing equipment
- 10 tie-downs for securing materials
- 10 tie-downs for securing equipment
- 10 tie-downs for securing materials
- 10 tie-downs for securing equipment
- 10 tie-downs for securing materials
- 10 tie-downs for securing equipment
- 10 tie-downs for securing materials

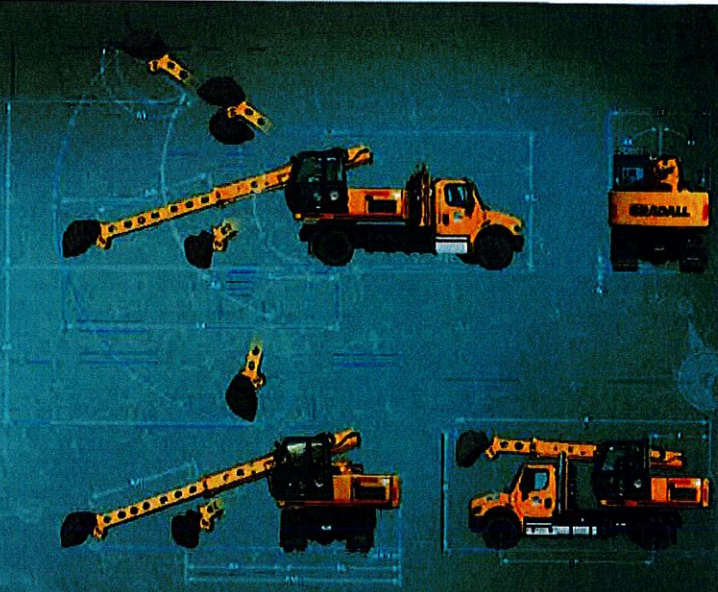


The chassis cab is designed to provide a safe and comfortable environment for the operator, with a focus on ergonomics and safety. The cab is also designed to be easy to enter and exit, with a wide door and a low step-in height. The cab is also designed to be easy to clean and maintain, with a smooth interior and a durable exterior. The cab is also designed to be easy to repair, with a simple design and a variety of replacement parts available.



DISCOVERY SERIES MODEL OPTIONS:

- Passenger side door step
- Auxiliary hydraulics
- Rear step



GRADALL MODEL D152 4X2 & D154 4X4 LIFT CAPACITY OVER SIDE OR REAR - LB./KGM

LOAD POINT HEIGHT	LOAD RANGE					
	15' 0" (4.6 M)		20' 0" (6.1 M)		MAXIMUM REACH	
	OVER END	OVER SIDE	OVER END	OVER SIDE	OVER END	OVER SIDE
ABOVE CURB LEVEL	18' 11" (5.8 M)				3000 (1360)	3000 (1360)
	15' 0" (4.6 M)	4000 (2115)	4650 (2115)	3100 (1440)	3100 (1440)	2800 (1305)
	10' 0" (3.0 M)	5300 (2445)	5300 (2445)	3500 (1600)	3500 (1600)	2800 (1305)
	REAR LEVEL 8' 0" (2.4 M)	5400 (2490)	5400 (2490)	3500 (1600)	3500 (1600)	2800 (1305)
AT CURB LEVEL	5' 0" (1.5 M)	5100 (2355)	5400 (2490)	3615 (1640)	3615 (1640)	2905 (1320)
		4700 (2180)	4700 (2180)	3365 (1525)	3365 (1525)	2950 (1340)
BELOW CURB LEVEL	5' 0" (1.5 M)	3050 (1390)	3090 (1400)			2955 (1340)
	10' 0" (3.0 M)	2635 (1200)	2635 (1200)			2530 (1150)
	10' 3" (3.1 M)					2500 (1130)

NOTE: The maximum weight of the load must not exceed the rated capacity of the lift. The weight of the load must be distributed evenly. The load must be centered on the platform. The load must be secured to the platform. The load must be lifted vertically. The load must be lowered vertically. The load must be lowered to the ground. The load must be lowered to the ground. The load must be lowered to the ground.

ATTENTION: The maximum weight of the load must not exceed the rated capacity of the lift. The weight of the load must be distributed evenly. The load must be centered on the platform. The load must be secured to the platform. The load must be lifted vertically. The load must be lowered vertically. The load must be lowered to the ground. The load must be lowered to the ground. The load must be lowered to the ground.

- Shown with 8715 6006 60' (1.92 m) arching bucket
- | | |
|--|--|
| A 20' (6.1 m) reach, 15' (4.6 m) max. height, 15' (4.6 m) max. height, 15' (4.6 m) max. height | DD 15' (4.6 m) reach, 15' (4.6 m) max. height, 15' (4.6 m) max. height, 15' (4.6 m) max. height |
| B 20' (6.1 m) reach, 15' (4.6 m) max. height, 15' (4.6 m) max. height, 15' (4.6 m) max. height | DJ 15' (4.6 m) reach, 15' (4.6 m) max. height, 15' (4.6 m) max. height, 15' (4.6 m) max. height |
| CE 20' (6.1 m) reach, 15' (4.6 m) max. height, 15' (4.6 m) max. height, 15' (4.6 m) max. height | DK 15' (4.6 m) reach, 15' (4.6 m) max. height, 15' (4.6 m) max. height, 15' (4.6 m) max. height |
| E 20' (6.1 m) reach, 15' (4.6 m) max. height, 15' (4.6 m) max. height, 15' (4.6 m) max. height | DL 15' (4.6 m) reach, 15' (4.6 m) max. height, 15' (4.6 m) max. height, 15' (4.6 m) max. height |
| F 20' (6.1 m) reach, 15' (4.6 m) max. height, 15' (4.6 m) max. height, 15' (4.6 m) max. height | DM 15' (4.6 m) reach, 15' (4.6 m) max. height, 15' (4.6 m) max. height, 15' (4.6 m) max. height |
| G 20' (6.1 m) reach, 15' (4.6 m) max. height, 15' (4.6 m) max. height, 15' (4.6 m) max. height | DN 15' (4.6 m) reach, 15' (4.6 m) max. height, 15' (4.6 m) max. height, 15' (4.6 m) max. height |
| AA 20' (6.1 m) reach, 15' (4.6 m) max. height, 15' (4.6 m) max. height, 15' (4.6 m) max. height | DO 15' (4.6 m) reach, 15' (4.6 m) max. height, 15' (4.6 m) max. height, 15' (4.6 m) max. height |
| AB 20' (6.1 m) reach, 15' (4.6 m) max. height, 15' (4.6 m) max. height, 15' (4.6 m) max. height | DP 15' (4.6 m) reach, 15' (4.6 m) max. height, 15' (4.6 m) max. height, 15' (4.6 m) max. height |
| AG 20' (6.1 m) reach, 15' (4.6 m) max. height, 15' (4.6 m) max. height, 15' (4.6 m) max. height | DQ 15' (4.6 m) reach, 15' (4.6 m) max. height, 15' (4.6 m) max. height, 15' (4.6 m) max. height |
| AJ 20' (6.1 m) reach, 15' (4.6 m) max. height, 15' (4.6 m) max. height, 15' (4.6 m) max. height | DR 15' (4.6 m) reach, 15' (4.6 m) max. height, 15' (4.6 m) max. height, 15' (4.6 m) max. height |
| AK 20' (6.1 m) reach, 15' (4.6 m) max. height, 15' (4.6 m) max. height, 15' (4.6 m) max. height | DS 15' (4.6 m) reach, 15' (4.6 m) max. height, 15' (4.6 m) max. height, 15' (4.6 m) max. height |



Get an even greater RETURN ON YOUR INVESTMENT combining designed-in Gradall versatility with a range of ATTACHMENTS

Governmental entities as well as small and specialty contractors will appreciate their return on investment, thanks to Gradall's famous designed-in versatility and a host of attachments.

Not only can you drive your Discovery Series excavator quickly from one site to another, our attachment design lets you perform one or more jobs – ditching, concrete and asphalt repair, mowing and culvert replacement – in a single day.

High-pressure, load-sensing hydraulics adjust automatically to deliver the power you need to handle various jobs while also conserving fuel. Optional auxiliary hydraulics at the boom end further extend the range of available attachments.

TYPICAL ATTACHMENTS:

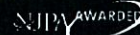
- Ditching Bucket
8215-6009 • 60" (1.52 m)
- Rotary Mower
8215-5005 • 50" (1.27 m)
- Pavement Removal Bucket
8215-6004 • 24" (0.610 m)
- Flail Mower
8215-5006 • 40" (1.02 m)
- Excavating Bucket
8215-6008 • 36" (914 mm)
- Fixed Thumb Grapple
8215-5003
- Tree Limb Shear
8215-5004

GRADALL

406 Mill Ave. SW, New Philadelphia, OH 44663

330.339.2211 • GRADALL.COM/DISCOVERY

FREIGHTLINER



GRADALL®

D172

CROSSOVER
HYDRAULIC EXCAVATOR



SPECIFICATIONS

Engine

- Cummins ISB 6.7. 660 ft lb Torque @ 1600 rpm. 300 hp @ 1600 rpm

Intake: Electric grid air warmer

Air Filter

- 2-stage dry type with safety element, ejector valve and service indicator

Electrical System

- 12 volt, 160 amp alternator with integral voltage regulator. 2 SAE Group 31 1900 CCA batteries

Fuel Tank Capacity: 80 gal (303 L)

DEF Tank Capacity: 13 gal (49 L)

Gear Speeds (with 11R22.5 tires)

Gear	1	2	3	4	5	REV
MPH	10.6	21.7	31.6	48.7	60	9.74
Km/hr	(17.0)	(34.9)	(50.9)	(78.4)	(97)	(15.2)

Upperstructure Cab

- All-weather cab isolated from frame on rubber mounts
- Tinted safety glass windows
- Skylight
- Acoustical lining
- Four-way adjustable seat
- Dome light
- Filtered air heater and defroster
- Air conditioning
- AM/FM radio
- Heat source is provided by a fast response, closed circuit hydraulic heater with 20,000 BTU/Hr. capacity
- Front window slides to overhead storage
- Rearview mirrors on right and left sides of the machine
- Windshield wiper and washer
- Operator's seat belt

Upperstructure Controls

- Two electronic joysticks control (hoist, bucket, telescope and swing)
- One rocker switch (tilt) control
- Joysticks are mounted on arm pods that are adjustable for individual operator comfort and convenience
- Quick change joystick pattern using interactive display
- Two foot pedals for remote control of undercarriage travel and brakes
- Steering is handled with a rocker switch on top of the left hand joystick
- Self-centering joysticks and panels; when controls are released, power for movement disengages and swing and travel brakes set automatically

System Monitor

- Top selector buttons include
 - Joystick pattern, hour meter and indicator lamps
- Bottom selector buttons include
 - Engine speed control, auto idle select
 - A/C on select and heater temperature control

The display shows as follows

- Park brake
- Low air brake pressure
- Malfunction indicator lamp (mil)
- Hydraulic oil level warning
- Hydraulic oil filter warning
- Engine stop lamp
- Amber warning lamp (engine)
- Wait to start lamp
- Diesel particulate filter lamp
- High exhaust system temperature
- Engine speed
- Fuel level
- DEF level
- Transmission gear request
- Transmission gear status
- Transmission oil temp
- Hydraulic oil temp
- Mode status (travel/remote)
- Check transmission lamp and cab blower fan

Boom

- Two piece triangular telescoping boom
- Adjustable boom rollers with eccentric shafts
- 220° boom tilt
- 105° boom pivot angle

Hydraulic System

Pumps

- One load-sensing bent axis piston pump; 0-58 GPM (0-219 L/min) total

SYSTEM SPECIFICATIONS

Four Double Acting Cylinders

- 2 hoist cylinders: 3.25" bore x 2.25" rod x 28.5" stroke (83 mm x 57 mm x 724 mm)
- 1 tool cylinder: 4.5" bore x 2.5" rod x 18.88" stroke (114 mm x 63.5 mm x 479 mm)
- 1 boom cylinder: 3.25" bore x 2.25" rod x 123" stroke (83 mm x 57 mm x 3124 mm)

Two Hydraulic Motors

- Swing, 51 hp (38kW); Tilt, 21 hp (16kW)

Operating Pressures

- Hoist.....3,800 psi (262 BAR)
- Tilt.....2,500 psi (172 BAR)
- Swing.....3,800 psi (262 BAR)
- Tool.....3,800 psi (262 BAR)
- Telescope.....3,800 psi (262 BAR)
- Pilot system.....550 psi (38 BAR)

Oil Capacity

- Reservoir 62 gallons (235 L)
- System 68 gallons (257 L)
- Pressurized reservoir with visual oil level gauge

Filtration System

- 5 micron return filter
- 10 micron pilot filter
- Fin and tube-type oil cooler with thermostatically controlled cooling fan
- Pressure-compensated, load-sensing valves with circuit reliefs in all circuits

D172 CROSSOVER HYDRAULIC EXCAVATOR

Undercarriage

- 4 x 2
- Wheelbase: 190" (4.83 m)
- Width 102" (2.6 m)

Transmission

- Allison 3500 RDS automatic

Gross Vehicle Axle Weight Rating

- 37,700 lb (17,100 kg)

Front Axles

- 14,700 lb (5,443 kg) rating

Rear Axle

- 23,000 lb (10,433 kg) rating 6.43 ratio
- Single reduction with driver controlled differential lock.

Suspension

- Front: leaf springs with automatic lock-out cylinders
- Rear: solid mount

Brakes

- Front: Meritor "Q" Series
 - Cam-Master Size: 16.5" x 5" (419 mm x 127 mm)
 - ABS Brakes
 - Automatic slack adjusters.
- Rear: Meritor "P" Series
 - Cam-Master Size: 16.5" x 7" (419 mm x 178 mm)
 - Automatic Slack Adjusters.
- Spring brake system incorporates emergency and parking brakes on the rear axle

Wheels

- Hub piloted disc 10-stud
- 11.25" (286 mm) bolt circle

Tires

- Front: 275/80R225 16-ply highway traction tread
- Rear: M/S11R22.5 14-ply mud and snow traction tread

Steering

- Integral hydraulic power steering

Standard Chassis Equipment

- Halogen headlights
- Tail lights
- Back-up lights and alarm
- Stoplights
- Identification lights front and rear
- Directional lights
- Four-way hazard lights
- Front tow hooks
- Desiccant type air dryer with automatic purge valve

Chassis Cab

- Two-person cab
- Sun visor
- Gauges for oil pressure
- Coolant temperature
- Air tank pressures
- Fuel level
- Def level
- Voltmeter
- Speedometer with odometer
- Tachometer
- Hour meter
- Engine and transmission monitor lights
- Engine shutdown controlled by engine electronics
- Indicator lights and controls for rear axle differential lock
- Park brake control
- Tinted safety glass
- Roll up and down windows
- Instrument panel lights
- Windshield wiper/washer
- West coast style mirror system with plane and convex mirrors

- Fresh air heater and defroster
- Thermostatically controlled heater
- Dome light
- Air suspension seat with seat belt both driver and passenger
- Key ignition switch with neutral start
- AM/FM bluetooth radio
- Duel electric horns
- Center storage console
- 12 volt power supply in dash
- Aluminum kick plates on insides of both chassis doors

Swing

- Priority swing circuit with axial piston motor
- Planetary transmission

Swing speed: 8 rpm

Swing Brake

- Automatic spring-set/hydraulic release wet-disc parking brake
- Dynamic braking is provided by the hydraulic system

Hydraulic Remote Control

- Upperstructure powered by chassis hydraulics through PTO
- Travel and brake pedals in the upperstructure cab
- Steering controlled with left hand joystick
- Digging brakes and front axle lockout cylinders set automatically with travel pedal in neutral
- Parking brakes controlled by toggle
- Electrically operated alarm mounted on undercarriage signal remote control movement in either direction, reverse movement when driven from undercarriage cab

GRADALL Model D152 4x2 Lift Capacity Over Side or Rear - LB. (kg)

LOAD POINT HEIGHT		LOAD RADIUS					
		15' 0" (4.6 m)		20' 0" (6.1 m)		Maximum radius	
		Over End	Over Side	Over End	Over Side	Over End	Over Side
ABOVE GROUND LEVEL	19' 1" (5.8 m)					3000 (1360)	3000 (1360)
	15' 0" (4.6 m)	4660 (2115)	4660 (2115)	3180 (1440)	3180 (1440)	2880 (1305)	2880 (1305)
	10' 0" (3.0 m)	5390 (2445)	5390 (2445)	3530 (1600)	3530 (1600)	2880 (1305)	2880 (1305)
	BOOM LEVEL 8' 8" (2.7 m)	5490 (2490)	5490 (2490)	3580 (1625)	3580 (1625)	2885 (1310)	2885 (1310)
	5' 0" (1.5 m)	5480 (2485)	5480 (2485)	3615 (1640)	3615 (1640)	2905 (1320)	2905 (1320)
AT GROUND LEVEL		4760 (2160)	4760 (2160)	3365 (1525)	3365 (1525)	2950 (1340)	2950 (1340)
BELOW GROUND LEVEL	5' 0" (1.5 m)	3690 (1675)	3690 (1675)			2955 (1340)	2955 (1340)
	10' 0" (3.0 m)	2695 (1220)	2695 (1220)			2690 (1220)	2690 (1220)
	10' 9" (3.3 m)					2580 (1170)	2580 (1170)

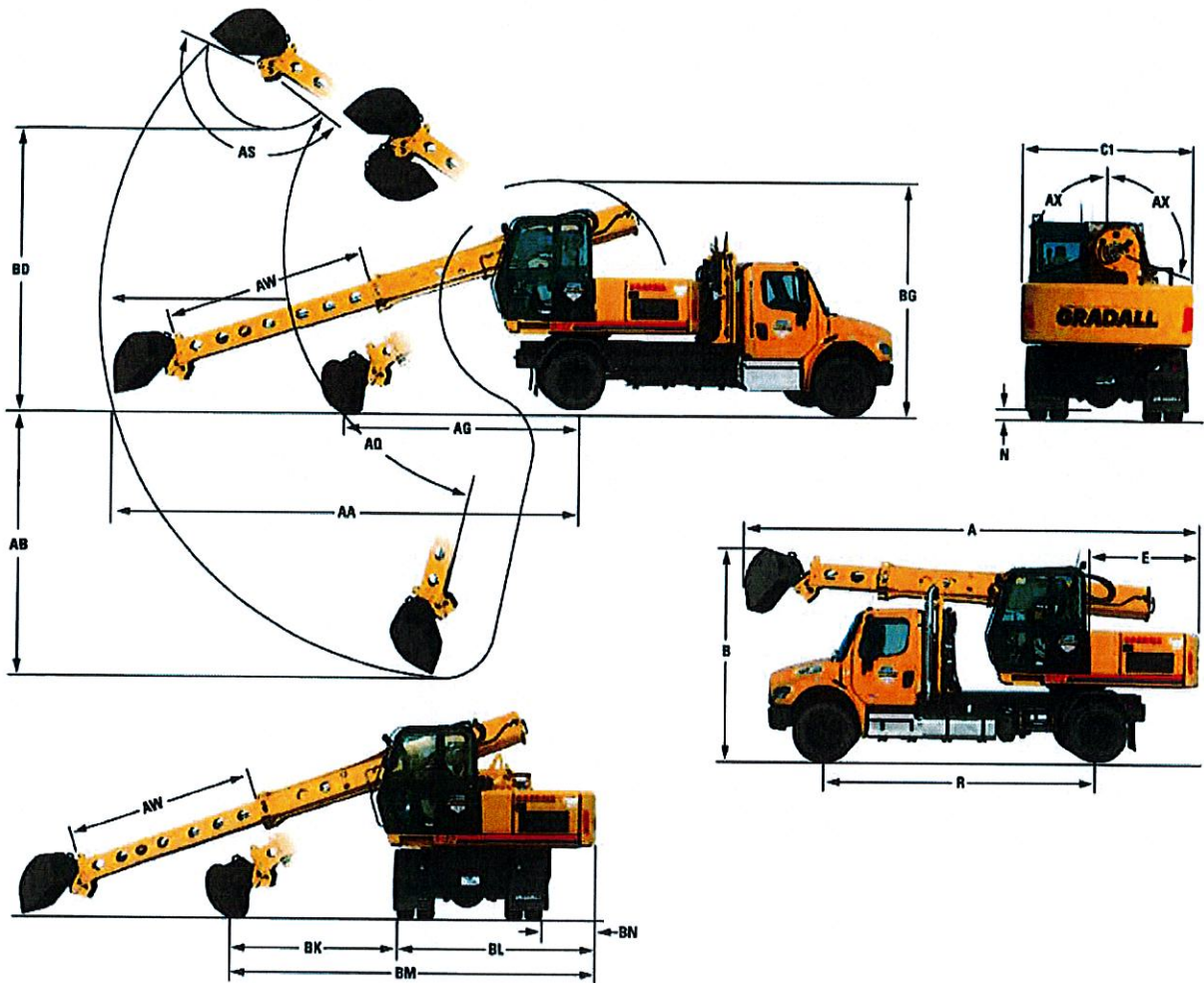
NOTE: The above loads are in compliance with the SAE standard J1097 DEC2005. They do not exceed 87% of hydraulic lifting capacity or 75% of tipping capacity.

The rated lift capacity is based on the machine being equipped with 4,500 lb (2041 kg) counterweight, standard boom, standard tires, no auxiliary hydraulics and no bucket

The load point is located on the bucket pivot point, including load listed for maximum radius.

Do not attempt to lift or hold any load greater than these rated values at specified load radii and heights. The weight of slings and any auxiliary devices must be deducted from the rated load to determine the net load that may be lifted.

ATTENTION: All rated loads are based on the machine being stationary and level on a firm supporting surface. For safe working loads, the user must make allowance for his particular job conditions such as soft or uneven ground, out of level conditions, side loads, hazardous conditions, experience of personnel, etc. The operator and other personnel must fully acquaint themselves with the Operator's Manual furnished by the manufacturer before operating this machine. Rules for safe operation of equipment must be adhered to at all times.



Dimensions

4 x 2

A	27'1" (8.3 m)	Overall length (boom in rack) with bucket
B	12'3" (3.7 m)	Overall height (boom in rack) with bucket
C1	8'6" (2.6 m)	Width of upperstructure
E	6'7" (2.0 m)	Swing clearance, rear of upperstructure
N	10" (254 mm)	Ground clearance (per SAE J1234)
R	15'10" (4.8 m)	Wheelbase
AA	24'11" (7.6 m)	Maximum radius at ground line (165° pivot)
AB	13'6" (4.1 m)	Maximum digging depth (165° pivot)
AG	11'4" (3.5 m)	Minimum level cut radius with bucket flat on ground line
AQ	30° Up & 60° Down	Boom pivot angle

4 x 2

AS	165°	Bucket pivot angle
AW	10'3" (3.1 m)	Telescoping boom travel
AX	110°	Bucket tilt angle (both sides of center)
BD	16'4" (5.0 m)	Minimum clearance of bucket teeth, with bucket pivot at maximum height
BG	14'1" (4.3 m)	Maximum height of working equipment with bucket below ground line
BK	6'8" (2.0 m)	Minimum bucket cleanup
BL	10'8" (3.3 m)	Swing lane clearance
BM	17'11" (5.5 m)	Minimum machine swing radius at ground level
BN	30" (762 mm)	Passenger side swing clearance

Function Forces

Rated boom force:
16,387 lb (72.9 kN)

Rated bucket breakout force:
11,400 lb (50.7 kN)

Weight

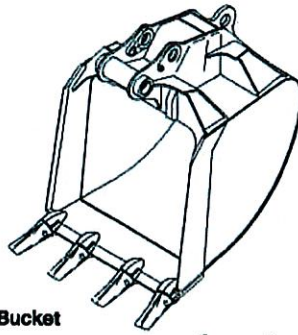
- Approximate working weight, including a 60" (1.54 m) bucket, fuel tank half full
- 4 x 2: 32,200 lb (14,600 kg)

Optional Equipment

- Set of five working lights
- Passenger side door step
- Auxillary hydraulics
- Rear step

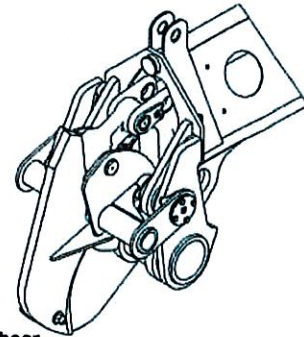
Attachments

- Buckets fabricated of steel plate, with high strength, low alloy cutting edges and wear strips
- Standard attachments available for wide range of applications



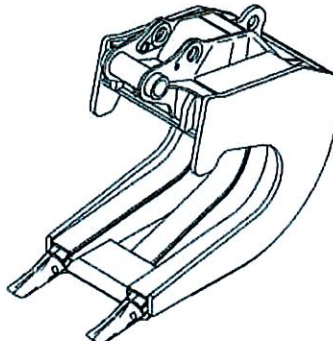
Excavating Bucket

8215-6008	36" (914 mm)	yd ³	m ³
	785 lbs (356 kg)	5/8	0.54



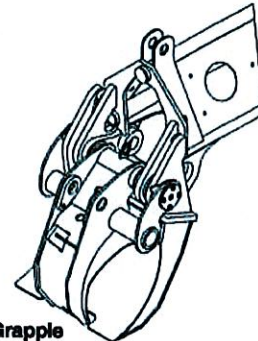
Tree Limb Shear

8215-5004 770 lbs (349 kg)



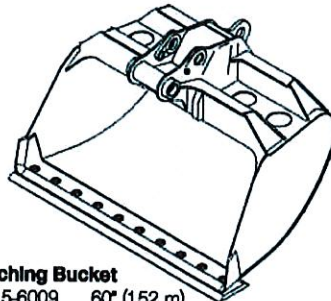
Pavement Removal Bucket

8215-6004 24" (0.610 m)
1284 lbs (582 kg)



Fixed Thumb Grapple

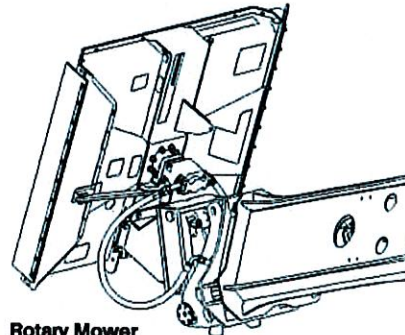
8215-5003 530 lbs (240 kg)



Ditching Bucket

8215-6009 60" (1.52 m)
784 lbs (356 kg)

8215-5001 60" (1.52 m)
914 lbs (415 kg)



Rotary Mower

8215-5005 50" (1.27 m)
1290 lbs (585 kg)

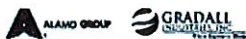
Flail Mower

8215-5006 40" (1.02 m)
1053 lbs (478 kg)

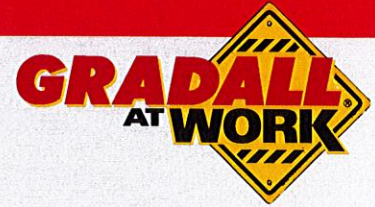
It is Gradall Policy to continually improve its products. Therefore designs, materials and specifications are subject to change without notice and without incurring any liability on units already sold. Units shown may have optional equipment.

GRADALL®

406 Mill Ave. SW, New Philadelphia, Ohio 44663
Phone: 800-445-4652 Fax: 330-339-8468
www.Gradall.com



Form No. 12001 3/20
Printed in USA



Excavator Pricing

SP 89 - Effective January 1, 2024

Discovery Crossover Series Excavators

Discovery Series excavators are the cost-effective solution for governments and contractors who need to get to jobs faster, complete many different jobs with fewer men and machines, all while keeping within tight equipment budgets. Both two-wheel and four-wheel-drive models feature the famous telescoping, tilting Gradall boom as well as a Freightliner truck chassis.

Model	Net Weight Lbs (kg)	Price
D172 4x2	32,200 (14,600)	\$368,092
D174 4x4	34,500 (15,650)	\$390,910

Rough Terrain Wheeled Excavators

Excellent stability allows rough terrain wheeled models to pick and carry large loads as well as work at the front, rear or either side of the carrier - all without the need for optional outriggers. A highly mobile undercarriage on Series V models moves easily over both pavement and dirt, all powered by a Tier 4 final complaint Volvo engine. The low-profile telescoping boom can work under bridges and trees, accomplishing more work with full boom tilt advantage.

Model	Net Weight Lbs (kg)	Price
XL3300 V	39,294 (17,823)	\$421,726
XL4300 V	43,580 (19,768)	\$462,685
XL5300 V	51,216 (23,231)	\$524,493

Highway Speed Wheeled Excavators

Highway speed excavators can be driven up to 60 mph, eliminating the need for a lowboy trailer while they move quickly to job sites and then back to the safety of the equipment yard. Series V models feature full-tilting telescoping booms and new Tier 4 final compliant Volvo engines as well as AutoDrive™ mobility advantages including an automatic transmission and other advantages.

Model	Net Weight Lbs (kg)	Price
XL3100 V 4x2	40,930 (18,566)	\$497,769
XL3100 V 4x4	41,720 (18,924)	\$517,389
XL4100 V 6x4	49,684 (22,539)	\$566,368
XL4100 V 6x6	50,925 (23,099)	\$581,998
XL5100 V 6x4	57,670 (26,159)	\$620,159
XL5100 V 6x6	58,379 (26,488)	\$646,945

Crawler Excavators

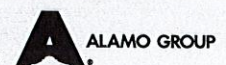
Series V models feature Tier 4 final complaint Volvo engines and other advantages, preparing them for cost-efficient, highly productive versatility on mud, rocks, sand and dirt. Versatility is rooted in the legendary full tilting, telescoping boom that can do more with more attachments, even working under bridges and in tunnels where conventional booms won't fit.

Model	Net Weight Lbs (kg)	Price
XL3200 V	39,240 (17,799)	\$374,634
XL4200 V	46,862 (21,256)	\$421,772
XL5200 V	54,452 (24,699)	\$497,954

SP 89 - Effective January 1, 2024



Gradall Industries LLC • 406 Mill Avenue SW • New Philadelphia, OH 44663 • Ph: (330) 339-2211



GRADALL® LIMITED WARRANTY

Gradall Industries, Inc. d/b/a Gradall ("Gradall") will repair or replace, at its option, any factory-installed part that is defective in materials or workmanship under normal use. Any needed part replacements will be made using new or remanufactured parts. This Limited Warranty is limited to repairing or replacing, at Gradall's option, any part proven defective under normal use; provided that the product has been properly registered with Gradall within thirty days after the in-service date and that all required reports are current. The warranty period begins on the product's in-service date, which is the first date the unit is either delivered to an end-user (the "Owner"), for purchase, rental or lease.

THIS WARRANTY EXTENDS ONLY TO THE ORIGINAL PURCHASER FROM GRADALL INDUSTRIES, INC. AND IS NON-TRANSFERABLE.

The Owner is responsible for all normal preventative maintenance and scheduled maintenance as detailed in the machine's Operator and Safety Manual. The Owner is also responsible for:

- Keeping the Operator and Safety Manual available to the operator of the product.
- Using the product in accordance with the Operator and Safety Manual.
- Releasing the product for warranty work.
- Reporting accidents immediately to Gradall.
- Using the product for safe, approved applications and using only approved accessories.
- Complying with factory initiated Field Campaigns.
- Using only approved components for maintenance and replacement parts.
- Ensuring that the operator of the product has been properly trained in the safe and proper use of the product.

This Limited Warranty is subject to those limitations and exclusions as listed in the Gradall Policies & Procedures Manual (41200037), which includes timelines and requirements for making claims under this Limited Warranty.

STANDARD WARRANTY

Gradall products carry the following warranties from the unit's in-service date for 2019 model-year (and beyond) machines:

- Standard Machines 2 Years or 3000 hrs., whichever comes first.
- Special Industrial Machines . . 1 Year or 1500 hrs., whichever comes first.

"Standard" and "Special Industrial" machine model designations are defined in the Gradall Policies & Procedures Manual (41200037)

What is Not Covered

- Parts associated with unit maintenance are not warranted beyond 1 year of the product's in-service date.
- Items subject to normal wear and tear, noise, vibration, or deterioration are not warranted.
- This Limited Warranty does not cover damage caused by abusive usage or extreme applications.
- Any operation beyond the rated capacity or the improper use or application of the product or the substitution of parts not approved by Gradall or the failure to release the product for warranty work.
- Tires, engines and batteries are warranted by the applicable Manufacturer.
- Corrosion due to external forces or damage caused by stones, salt, gravel, accidents, chemicals or other forms of impact, industrial fallout or pollution, or previous repair.
- External surface rust left unrepaired due to neglect of the product.
- Chassis not manufactured by Gradall.



EXTENDED WARRANTY

An Extended Warranty may be purchased for a Gradall product at any time up to the end of the Standard Warranty period. A maximum of 1 extra year of Extended Warranty may be purchased for a maximum warranty period of 3 years.

What is Not Covered

- Items subject to service, maintenance, or normal wear, including but not limited to O-rings, Seals, Hoses, Paint, Tires, Belts, or Filters.
- Items supported by separate warranties such as the Engine or Transmission.
- Extended Warranty is not available for Special Industrial Machines and/or Applications due to their extreme nature.

MISCELLANEOUS

- Proper venue for any lawsuits arising from or related to this Limited Warranty shall only be in Tuscarawas County, Ohio, and governing law shall be the laws of the State of Ohio.
- Gradall may waive compliance with any of the terms of this Limited Warranty, but no waiver of any terms shall be deemed to be a waiver of that term in the future or of any other term.
- If any provision of this Limited Warranty shall violate any applicable law and is held to be unenforceable, then the invalidity of such provision shall not invalidate any other provisions herein.

EXCEPT AS PROVIDED HEREIN, GRADALL MAKES NO WARRANTIES OF ANY KIND, EXPRESSED OR IMPLIED, INCLUDING NO WARRANTIES OF MERCHANTABILITY OR FITNESS FOR A PARTICULAR USE WITH RESPECT TO PRODUCTS OR PARTS FURNISHED BY GRADALL. EXCEPT AS PROVIDED HEREIN, GRADALL SHALL HAVE NO LIABILITY OR RESPONSIBILITY TO OWNER OR ANY OTHER PERSON OR ENTITY WITH RESPECT TO ANY LIABILITY, LOSS, OR DAMAGE CAUSED OR ALLEGED TO BE CAUSED DIRECTLY OR INDIRECTLY BY THE PRODUCTS INCLUDING, BUT NOT LIMITED TO, ANY INDIRECT, SPECIAL, CONSEQUENTIAL, OR INCIDENTAL DAMAGES RESULTING FROM THE USE OR OPERATION OF THE PRODUCTS OR ANY BREACH OF THIS WARRANTY. GRADALL'S MAXIMUM LIABILITY UNDER THIS WARRANTY SHALL BE THE PURCHASE PRICE PAID TO GRADALL WITH RESPECT TO THE WARRANTED PRODUCT.

GRADALL®

Gradall Industries, Inc.
406 Mill Ave. SW
New Philadelphia, Ohio 44663
Phone: 330.339.2211
Toll Free: 800.445.4752
Fax: 330.339.3579
www.gradall.com

Certified ISO 9001 • 01/20
Part No. 41200003



Company ID Number:571783

Client Company ID Number:1453697

Information Required for the E-Verify Program	
Information relating to your Company:	
Company Name	Tractor & Equipment Co Inc
Company Facility Address	5336 Messer Airport Highway Birmingham, AL 35212
Company Alternate Address	PO Box 12326 Birmingham, AL 35202
County or Parish	Jefferson
Employer Identification Number	63-0211767
North American Industry Classification Systems Code	Merchant Wholesalers, Durable Goods (423)
Parent Company	
Number of Employees	500 to 999
Number of Sites Verified for	22

INVITATION TO BID HEAVY EQUIPMENT

NOTICE OF BID OPENING

NOTICE IS HEREBY GIVEN that the Association of County Commissions of Alabama, which administers the Alabama County Joint Bid Program on behalf of Alabama's county governing bodies, shall receive and open bids for the purchase of zero (0) or more items of heavy road equipment at its office located at 2 North Jackson Street, Montgomery, Alabama, at **10:00 a.m. on Friday, November 1, 2024**. Bid specifications are available at <http://www.alabamacounties.org/heavy-equipment/> for each of the following items:

Track Mount Excavators
Compact Track Mount Excavators
Mini Track Excavator
Wheeled Excavator
Highway Speed Truck Excavators
Motor Grader
Wheel Loader
Heavy Duty Dump Chassis
Lowboy Tractor

Lowboy Trailer
Skid Steer and Attachments
Ride-on Industrial Boom Mowers
Rubber Tire Roller
One-man Pothole Patchers
Trailer Mount Mastic Patcher/Crack Sealer
Chip Spreader
Asphalt Distributor

Time is of the essence in submitting bids and only bids received in the Association office by 10:00 a.m. Central Time on Friday, November 1, 2024 will be opened and considered. Bidders and any other interested individuals are invited to attend the bid opening.

NOTICE OF BID OPENING PROCEDURES

All bids for **Heavy Equipment** will be opened and the name(s) of the bidders read aloud on the morning of the bid opening on **Friday, November 1, 2024 at 10:00 a.m.** at 2 North Jackson Street, Montgomery, AL. The specifics of each bid submitted will be compiled by the Association staff thereafter and will be available, **upon written or emailed request**, one week after the bid opening. Requests should be emailed to jointbid@alabamacounties.org.

THE INVITATION PACKAGE

The invitation package for each item to be bid includes: this invitation to bid, the written bid specifications for the particular item of heavy road equipment, and a Bid Submittal Form to be used in submitting a bid for that particular item. Bidders should verify that they have received all pages of the invitation package. If there are any omissions, the bidder should contact **Kenya Howard** in the Association office by mail, fax, or e-mail (jointbid@alabamacounties.org) to request missing pages. It is the responsibility of the bidder to make this request in sufficient time to prepare and submit the bid in time for the bid opening. Bidders should carefully read and comply with all parts of the invitation package, including all attachments and/or any addendum.

PREPARING AND SUBMITTING BIDS

All bids must be typed or hand written in ink on the attached Bid Submittal Form. **The completed Bid Submittal Form shall be placed in front of and separated from all other documents included in the bid packet, such that it will be the first document viewed upon opening the bid packet.**

Bids submitted in pencil and bids not submitted on the Bid Submittal Form **will not** be considered. All bids shall include a current catalog or model specification document for the equipment model number being offered for consideration. Bids submitted without such documentation **will not** be considered. Only information contained on the attached Bid Submittal Form and in the model specification document will be considered in evaluating bids.

Each separate requirement in the bid specification includes a block for indicating whether or not the item bid meets the specification. The bidder shall indicate compliance with each requirement by checking "Yes" or "No" in the block to the right of each bid specification. In addition, the bidder shall indicate the page number in the supplied manufacturer's equipment literature on which compliance with the specification can be verified. Failure to complete this portion of the bid form may result in the subject bid not being considered.

Each bid for one of the heavy equipment items included in the bid package must be submitted on the Bid Submittal Form for that item and forwarded in a separate envelope with the bid item and item number clearly identified on the outside of the envelope. Envelopes containing a "no bid" shall also include the words "NO BID" on the outside of the envelope. Facsimiles and e-mails will not be accepted. Bids submitted by "Express/Overnight" services must be in a separate inner envelope or package sealed and identified as stated above. All bids must be received in the Association office prior to the bid opening. Bids received after the deadline will be returned unopened.

The County Joint Bid Program reserves the right to require a performance bond from successful bidders as permitted under Alabama law. However, **no bid bond is required for this bid offering.**

All bids should be mailed or hand-delivered to:

ATTN: Patrick McDougald
Association of County Commissions of Alabama or ACCA
2 North Jackson Street, FL 7, Montgomery, Alabama 36104 (Physical Address)
P.O. Box 5040, Montgomery, Alabama 36103 (Mailing Address)

BID SPECIFICATIONS

Please note that each piece of heavy equipment available for bid may include several different sizes and categories of machines. You should read each set of specifications very carefully as the differences vary depending upon the piece and size of equipment.

The award will be based on the total cost of the **Standard Machine** bid by the lowest responsible bidder. Each Bid shall include a **Manufacturer's Suggested Retail Price Sheet (MSRP)** for each machine bid. The percent difference between the Manufacturer's Suggested Retail Price (MSRP) for the standard machine as specified by these bid specifications and the actual price bid by the vendor will be calculated and that percentage discount shall be applied to any options an individual county may choose to add to the machine.

Once the bids have been awarded, any county participant purchasing under this program may, at its discretion, add any of the vendor's available options at the same discount off the Manufacturer's Suggested Retail Price Sheet as was applied to the Standard Machine Price Bid.

Any use of specific names and/or model numbers in the attached specifications is not intended to restrict the bidder or any seller or manufacturer, but is included solely for the purpose of indicating the type, size, and quality of materials, product services, or equipment considered best adapted to the use of the counties participating in the joint bid program.

ACQUISITION AND FINANCING OPTIONS

The awarded Vendor will provide the equipment, including any options required by the purchaser, at the awarded price as contracted through the Joint Bid Program. The purchaser may secure its own financing to acquire the equipment or execute any financial options available under Alabama law with the awarded Vendor in order to acquire the equipment.

BIDDER QUALIFICATIONS

All bidders and all program participants must be in compliance with any applicable federal, state, county and municipal laws, regulations, resolutions and ordinances, including but not limited to, licensing, permitting, and taxation requirements. All bidders should be prepared to submit evidence or documentation as proof that they are properly licensed and permitted under any applicable laws upon request. Such evidence or documentation may be submitted with the bid. Additionally, all bidders shall provide proof that they are in compliance with the E-Verify requirements of Alabama's Immigration Law (Ala. Code § 31-13-1 et seq., as amended by Act No. 2012-491).

BID AWARD

The Houston County Commission will serve as the awarding authority for all bids and will award all contracts at a regular meeting of the Houston County Commission. Any and all bids submitted in compliance with this invitation to bid shall be considered, and award will be made to the lowest responsible bidder meeting bid specifications as determined by the awarding authority in compliance with Alabama law. All bids will be reviewed and evaluated by a committee created for that purpose, which committee will make comments and recommendations to the awarding authority regarding the award. All factors contained in each invitation package will be evaluated in determining the successful bidder, and any omissions of the stated requirements may be cause for rejection of the bid submitted. The awarding authority reserves the right to reject any and all bids, to waive any informality in bids, and to accept in whole or in part such bid or bids solely at its discretion.

The contract period will be one year with an option to renew for a second and third year under identical price, terms, and conditions upon the mutual consent of the vendor and the awarding authority. Any renewal contract shall be approved in writing by the vendor and the awarding authority no later than 90 days prior to the expiration of the existing contract.

CONTACT REGARDING BIDS AND INVITATION

Contact initiated by a potential bidder with any county official, county employee, or member of the Association staff shall only be as specifically set out in this Invitation to Bid. Any questions related to the bid or the County Joint Bid Program shall be directed to Association staff in writing under the procedures set out in this Invitation to Bid. Additionally, a bidder may contact the Association in writing to request an appointment to review bid specifications following the bid opening. **However, there shall be no communication with any county official or county employee regarding this bid between the date of this invitation and the date of bid award.** Any contact other than as set out here shall be deemed as an attempt to unduly influence the bid award, and shall be grounds for rejection of the bid submitted by the bidder initiating such other contact.

Any questions or problems related to downloading or obtaining copies of this Invitation to Bid should be directed to **Kenya Howard** at jointbid@alabamacounties.org or **334-263-7594**.

Any other questions or requests for additional information regarding this invitation or the bid specifications shall be submitted **in writing** no later than five (5) days prior to bid opening to:

ATTN: Patrick McDougald
Association of County Commissions of Alabama
P.O. Box 5040
Montgomery, Alabama 36104

OR

Patrick McDougald
Email: pattymackdaddy@gmail.com